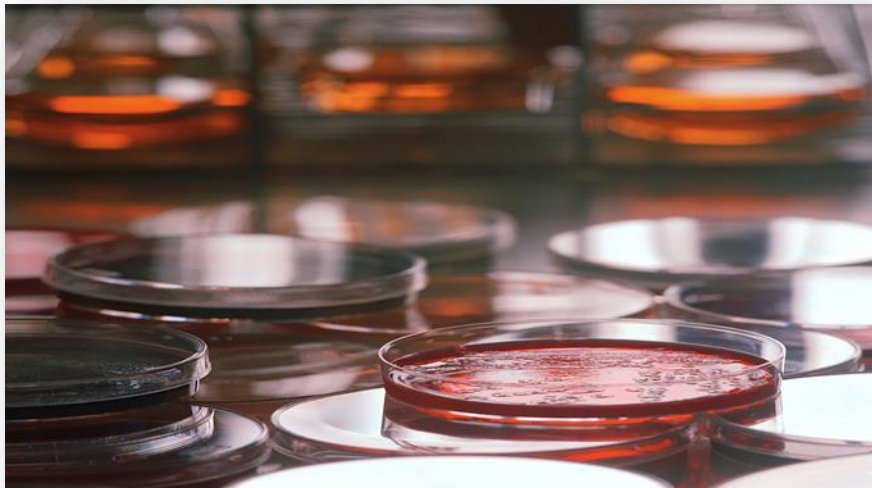


EQUALIS (External Quality Assurance In Laboratory Medicine In Sweden)

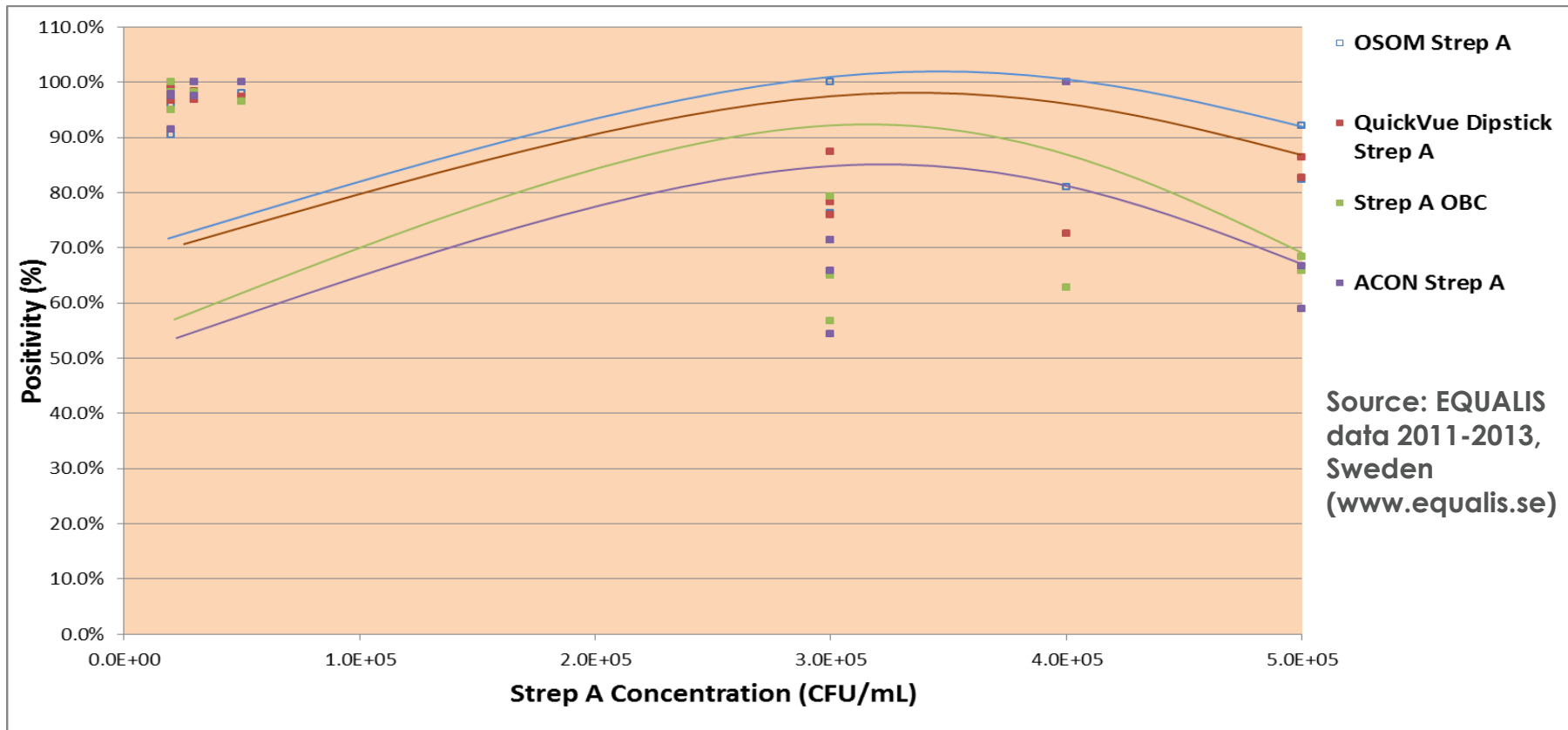


Summary of Streptococcus A Rapid Test Results 2011-2013

External QA Data

Testing period:	2011						2012									2013		
Distribution Batch:	11-12/1	11-12/2	11-12/3	11-41/1	11-41/2	11-41/3	12-04/1	12-04/2	12-04/3	2012-22/1	2012-22/2	2012-22/3	2012-40/1	2012-40/2	2012-40/3	2013-04/1	2013-04/2	2013-04/3
Concentration (CFU/mL):	1.0E+07	2.0E+04	3.0E+05	3.0E+04	2.0E+07	3.0E+05	4.0E+05	3.0E+04	2.0E+07	3.0E+05	1.0E+07	2.0E+04	1.0E+07	5.0E+04	5.0E+05	5.0E+05	1.0E+07	2.0E+04
Positives/total returns																		
OSOM Strep A	20/21	19/21	16/21	21/21	20/21	15/21	17/21	21/21	21/21	22/22	21/22	22/23	54/54	51/52	42/51	106/115	115/116	104/115
QuickVue Dipstick Strep A	497/504	483/500	393/502	497/513	508/512	393/518	372/513	499/507	512/514	458/524	513/519	521/526	504/512	499/513	427/516	401/464	451/459	453/462
Strep A OBC	59/60	57/60	34/60	55/56	56/56	37/57	37/59	57/57	57/58	46/58	54/56	56/57	52/54	54/56	39/57	29/44	43/44	44/44
ACON Strep A	42/44	44/45	25/46	40/41	42/42	27/41	21/21	43/43	42/43	30/42	39/40	40/41	39/40	39/39	23/39	24/36	35/36	32/35
% Positive																		
OSOM Strep A	95.2%	90.5%	76.2%	100.0%	95.2%	71.4%	81.0%	100.0%	100.0%	100.0%	95.5%	95.7%	100.0%	98.1%	82.4%	92.2%	99.1%	90.4%
QuickVue Dipstick Strep A	98.6%	96.6%	78.3%	96.9%	99.2%	75.9%	72.5%	98.4%	99.6%	87.4%	98.8%	99.0%	98.4%	97.3%	82.8%	86.4%	98.3%	98.1%
Strep A OBC	98.3%	95.0%	56.7%	98.2%	100.0%	64.9%	62.7%	100.0%	98.3%	79.3%	96.4%	98.2%	96.3%	96.4%	68.4%	65.9%	97.7%	100.0%
ACON Strep A	95.5%	97.8%	54.3%	97.6%	100.0%	65.9%	100.0%	100.0%	97.7%	71.4%	97.5%	97.6%	97.5%	100.0%	59.0%	66.7%	97.2%	91.4%

Performance of Rapid Tests at different Strep A sample concentrations



OSOM[®] Strep A shows:

- Consistently high results for all sample types
- Positivity rate consistently higher than competitors